

# 1 MILE POND & BEACHES

*This circular route includes inland lakes and a beautiful shoreline. It affords good views of the hills along with opportunities for beach-combing and enjoyment of all the coast has to offer – birding, rock-pooling, paddling, even a little sun-bathing!*

*Vehicle tracks can be followed for the majority of the walk if wished and there is little height gain.*

## Main route

The walk begins and ends at Eliza Cove, towards the end of the road which leads down from the Natural Resources building. Please park safely and courteously, close to the start of the track which is the last turning to the right.

Take the easily visible vehicle track in a roughly westerly direction and hug the coastline, alternating south then west, for the outward section. After roughly 2.3km of walking, a white sand beach is reached. Enjoy a glorious stroll along the length of the beach, picking up the vehicle track and heading west from the end. Continue along the coastline or opt for vehicle tracks, staying on the south side of the ponds. Around 4.4km from the start point there is another, smaller, white sand cove.

A clear vehicle track leads from here, continuing west towards the mouth of Mullet Creek. Bend right with the track, following the eastern side of the creek with Sapper Hill now ahead in the distance. (At the time of writing) there is fence with a gate after around 5.3km of walking.

Go through the gate. The track bears slightly right as the creek begins to bend to the left (west). Walk up, over and down a small rise, staying with the track as it continues up a slight incline to meet another track, crossing left – right (west – east) at about 5.8km. Take care here not to overshoot! Use the map for guidance. Turn right.

After just 300 – 400m the west end of Mile Pond should be in view towards the right. Rocky outcrops flank the southern

## Tips:

- ▶ Snacks or a picnic are a must to enjoy by a lakeside or on the beach.
- ▶ Local opinion is divided on the best way to walk this circle – try out both directions when familiar with the terrain.



Mile Pond

shore and there are lovely views across the pond and to the ocean beyond. Continue following the clear vehicle tracks, staying parallel to the pond at a distance of roughly 100 – 200m north of it.

As the end of the pond is reached, the track bends towards it. (At the time of writing) there is a gate close to the eastern end of the pond after 7.4km of walking. Go through the gate and follow the track, east then south in the direction of the shore. It winds, so there may be times of appearing to head in the wrong direction but as the white sand beach from the early part of the walk comes into view, ensure to aim for it.

Turn left before reaching the beach at around 8km to follow the vehicle tracks running parallel to the beach in an easterly direction. Return to the start point by using the same track as for the outward walk or choose inland alternatives. The tall posts (old rugby posts) are good markers.

## Walk further

Add in a loop to take in the corral as described in walk 2, “Sapper Hill Corral & Mile Pond”.



Logger duck



Faccine



Smooth ragwort

# Self-Guided WALKS

## STANLEY MILE POND



### Flora & Fauna highlights

- |                |                                       |
|----------------|---------------------------------------|
| Diddle dee     | Blackish and Magellanic oystercatcher |
| Marsh daisy    | Dolphin gull                          |
| Pale maiden    | Falkland steamer duck                 |
| Pig vine       | Kelp goose                            |
| Scurvy grass   | Magellanic snipe                      |
| Sheep's sorrel | Southern giant petrel                 |
| Smooth ragwort | Two-banded plover                     |
| Thrift         | Upland goose                          |
| Wild celery    |                                       |



Jetty Visitor Centre, Ross Road, Stanley  
FALKLAND ISLANDS FIQQ 1ZZ  
+500 22281 info@falklandislands.com  
twitter.com/FITBTourism  
facebook.com/FITBTourism

[www.falklandislands.com](http://www.falklandislands.com)

Self-Guided

# WALKS

## STANLEY MILE POND



*The difficult and demanding work of the de-mining teams led to the re-opening of spectacular beaches and heathland areas. Explore the area around the stone corral and Mile Pond to enjoy beautiful expanses of white sand, rugged coastlines and relaxing shores. Flora and fauna abound with lovely views to the hills and across the sparkling ocean.*



## 2 MILE POND & STONE CORRAL

This short circular route takes in Sapper Hill corral and provides beautiful views over Mile Pond, Round Pond and the south-east coast of Stanley. It's great for dog walking or a family outing including a picnic and games around the corral.

Vehicle tracks can be followed for the majority of the walk and there is a little height gain/loss with a maximum elevation of around 60m.

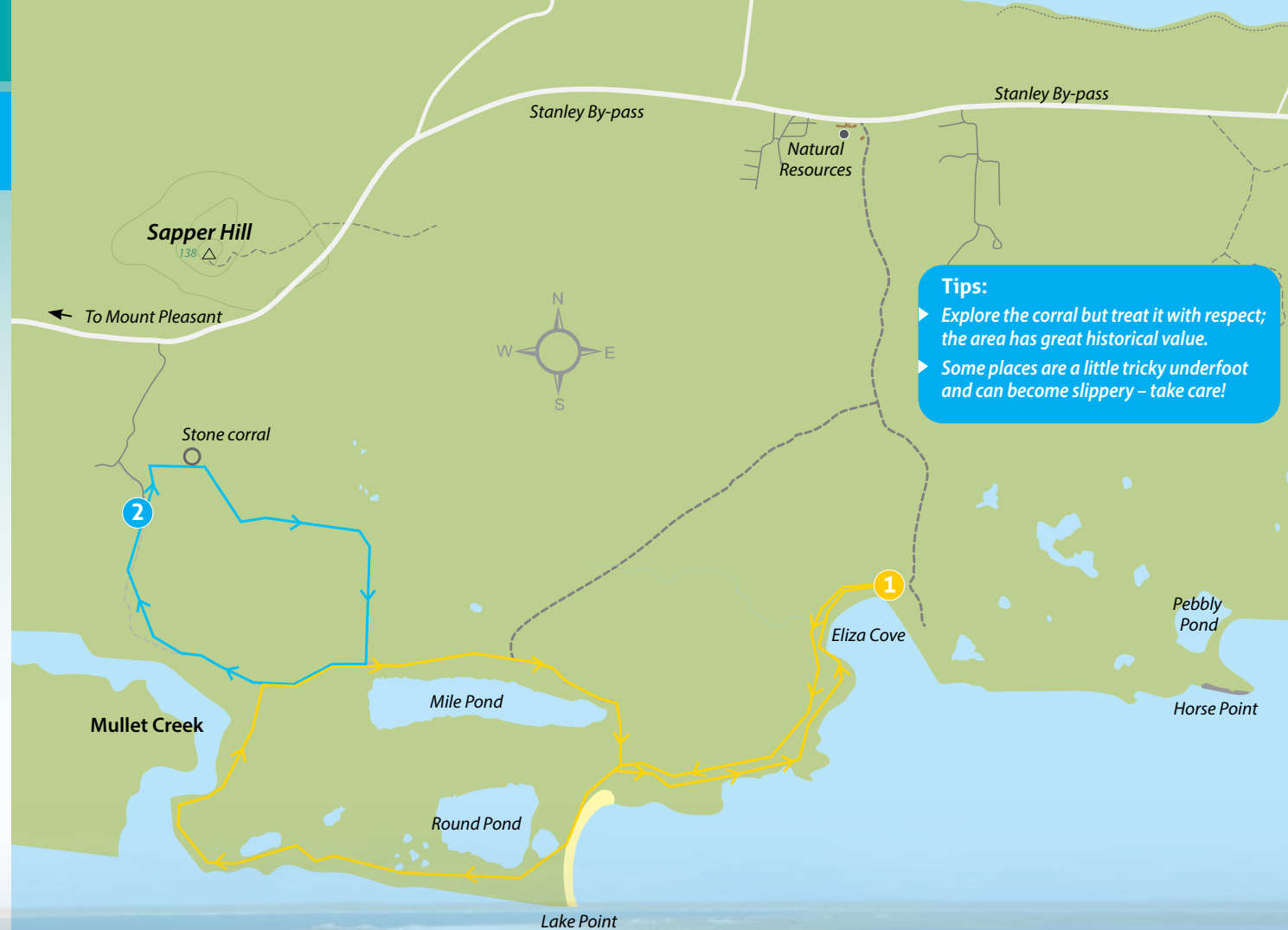
### Main route

A clear vehicle track leads from the Stanley – Mount Pleasant road to begin the route at, or close to Sapper Hill corral. Stand so that the information board at the entrance to the corral is behind, then begin the walk in a south-easterly direction heading up a slope to a nearby ridge-line. At the top of this low ridge, the vehicle tracks bend round to the left of a crater – keep following the tracks to the east and enjoy the views to the south. The track draws level with the west end of Mile Pond (though still above it) and turns right towards the pond.

The track fades somewhat but the ground is relatively easy to traverse to a point just before the north-west corner of the pond where a clear track crosses at right angles. Turn right to follow the track in a westerly direction. The houses at Mullet Creek can be seen. Stay with the track that bends away to the right, heading uphill. The Sapper Hill masts can be seen on the return to the start point.

### Walk further

Providing a safe parking place can be found, the corral can be reached from the main road.



**Tips:**  
▶ Explore the corral but treat it with respect; the area has great historical value.  
▶ Some places are a little tricky underfoot and can become slippery – take care!

### Countryside Code

Our Islands for all to enjoy. Help us protect them by:

1. Always ask for permission before entering private land.
2. Keep to paths wherever possible. Leave gates, open or shut, as you find them.
3. Be aware of the high fire risk throughout the islands; particularly when lighting fires, BBQs or smoking.
4. Do not litter\*. Take your rubbish home with you or use a bin provided
5. Never feed, touch, handle, injure or kill any wild bird or animal\*.
6. Always give animals the right of way. Do not block the routes of birds or animals coming home to their colonies. Do not startle or chase wildlife from resting or breeding areas\*.
7. Prevent disturbance to wild birds and animals. Always stay on the outside of colonies and remain at least 6 m (20 ft) away.
8. When taking photographs or filming, stay low to the ground. Move slowly and quietly. Make sure your flash is turned off\*. Always be aware of the location of your camera and equipment, including "selfie-sticks". Do not use this to get closer to wildlife.
9. Some plants are protected and should not be picked\*. Wildflowers are there for all to enjoy.
10. Whalebones, skulls, eggs, etc. may not be exported from the Falkland Islands\*. They should be left where they are found.
11. Do not disfigure rocks or buildings\*.

*\*Such actions may constitute an offence in the Falkland Islands and could result in significant fines.*

### Stay Safe

Always tell someone where you are going with an estimated return time. Ensure you have plenty to eat and drink. Wear layers of clothing to allow for changing weather conditions.

Please respect fences, stepping over or through the wires not onto them, and leave all gates as found; they are there for a reason!

Following the hard work of the de-mining teams, the Falklands are now mine-free. In the extremely unlikely event of finding any suspect item, photograph, log and mark the position. Inform the landowners and/or the Royal Falkland Police on 28100. DO NOT touch the object.



Marsh daisy



Inside the stone corral



Lady bird on Falklands celery



Upland Geese on Round Pond